

Living Shorelines

Will They Work in Old Saybrook?

Sandy Prisloe, Environmental Planner

Living Shorelines Workshop

UConn Avery Point

January 9, 2014



What Will Be Covered

- Where are we?
 - Existing conditions
 - Current resilience efforts
- Where are we going?
 - Greater coastal resilience
 - Protecting built and natural environment
- How do we get there?
 - Lots of questions
 - Few answers



Setting

Abuts
Long Island Sound
at the mouth of
the CT River

Coastline
6 miles on LIS
17 miles on CT
River

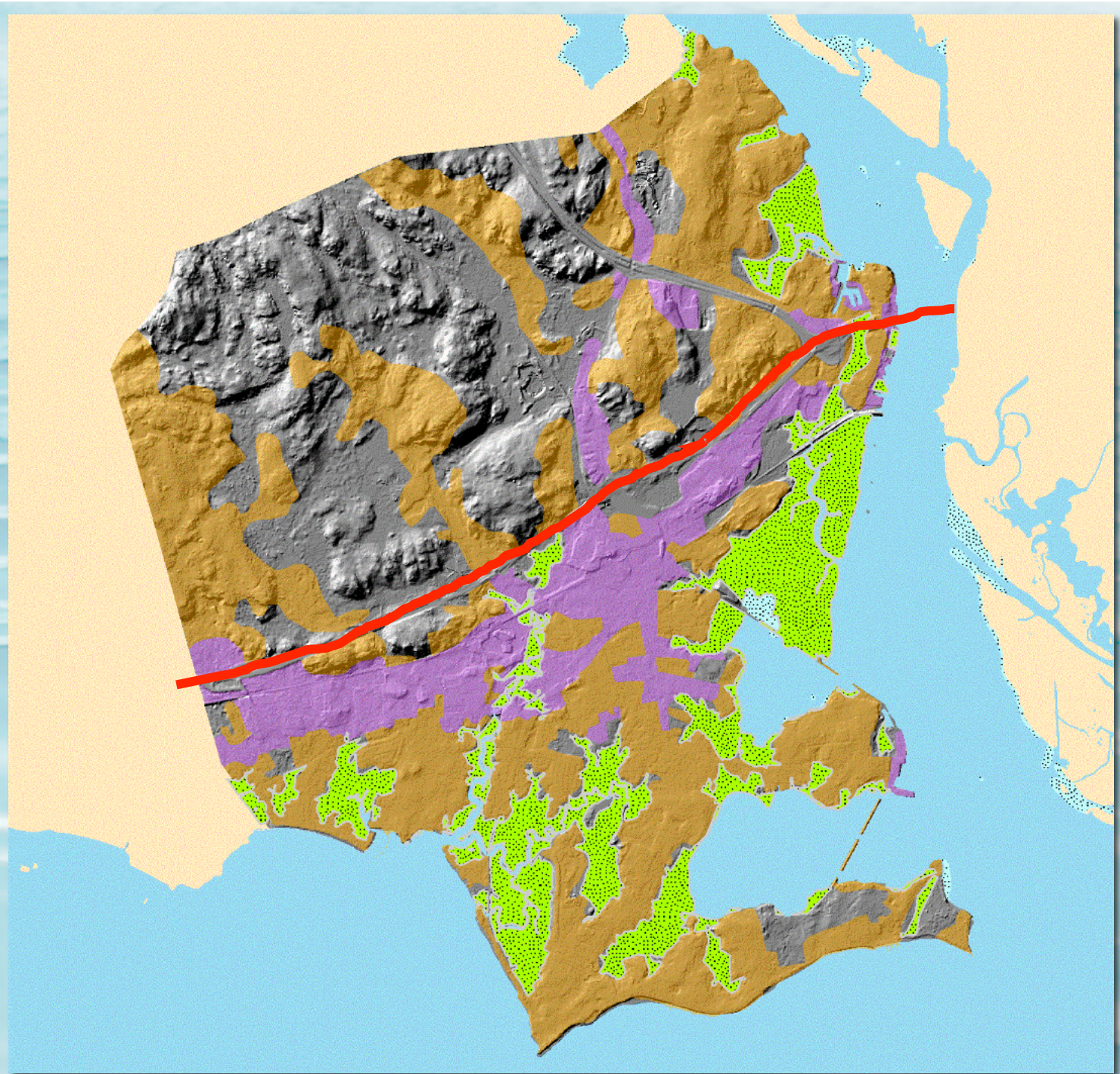


Land Use

2010 Population
10,242

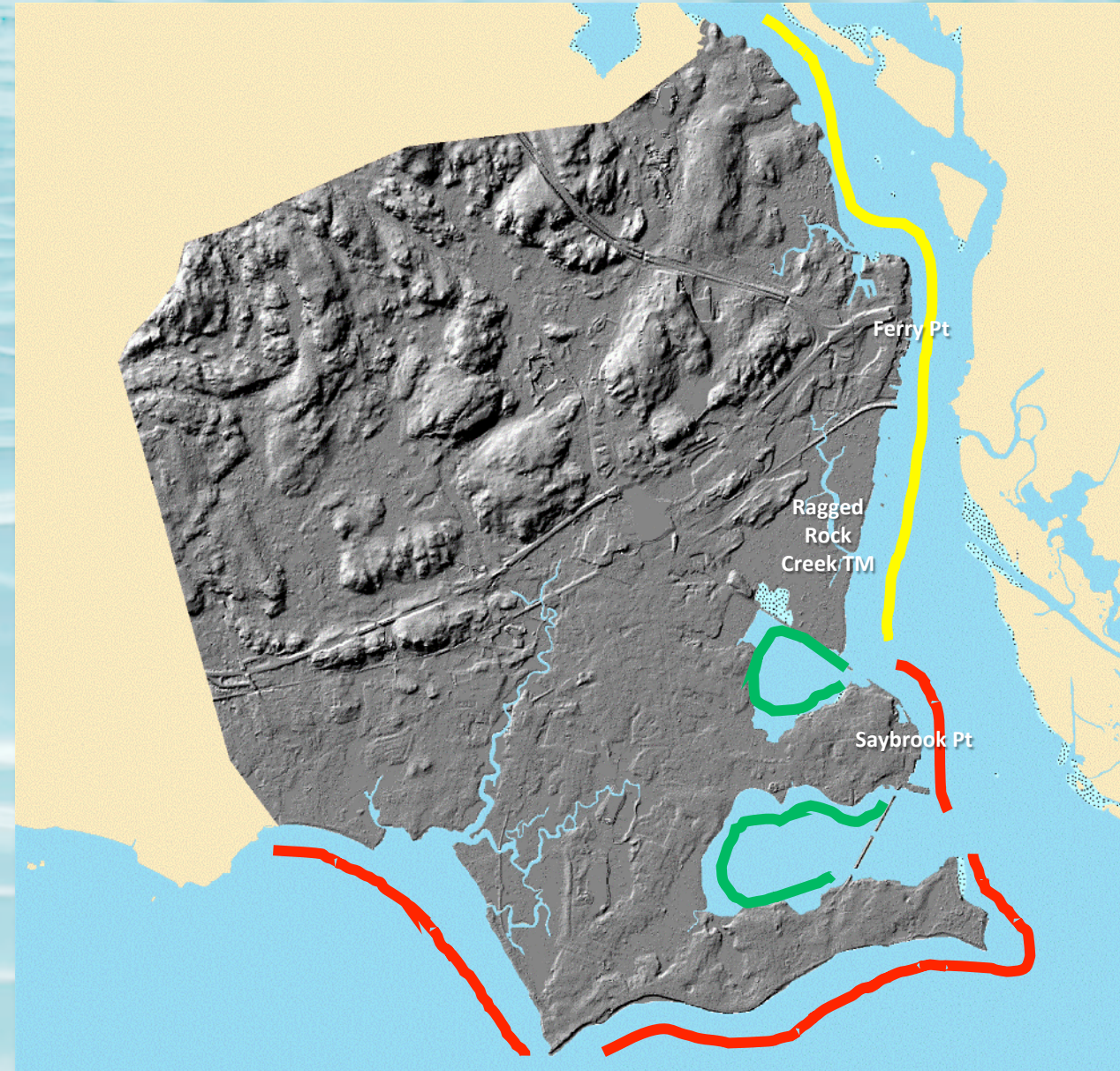
~77% of buildings
are located south of
Route 95

~12% of buildings
are within 300' of
the shoreline



Shoreline Categories

- Low Energy
 - North and South Coves
- Moderate Energy
 - CT River – boat wakes, currents and storms
- High Energy
 - LIS – **storms** and boat wakes
- Natural shorelines
 - North and South Coves
 - Ragged Rock Creek Tidal Marsh
- Hardened
 - LIS shoreline
 - CT River – Saybrook & Ferry Points



Some Current Mitigation Actions

- Actions to protect buildings
 - Building Code – substantial improvements and new construction
 - Elevating Buildings – NFIP compliance
 - Groins
 - Shoreline hardening
- Actions to protect natural areas
 - Dune and wetland restoration
 - Preservation of open space
- Living shorelines – Not yet

Hardened Shorelines – LIS – Chalker Beach





Plum Bank Shoreline - LIS





Hardened Shorelines – LIS – Cornfield Point





Hardened Shorelines – LIS – Knollwood





Photo courtesy of Janis Esty

Hardened Shorelines – LIS – Fenwick





Dune Restoration – LIS – Fenwick





Natural Shoreline – CT River





Aerial photo courtesy of Joel Stocker

Questions

- What qualifies as a living shoreline
- What types of Living Shorelines (LS) work in various energy zone settings
- Where might LS work in Old Saybrook
- Are there short- and long-term benefits beyond shoreline protection
- How are sites evaluated and selected for LS
- How are LS permitted
- Who benefits – who pays
- How will sea level rise impact LS
- What if everyone just wants a seawall – need to change perceptions

Thank You

Sandy Prisloe
Environmental Planner
Old Saybrook, CT



Old Saybrook
Land Use Department